

Maine Tree Farm NEWSLETTER

Summer 2015

A publication of the Maine Tree Farm Committee



Issue No. 6

2015 Annual SWOAM/Tree Farm Field Day September 12, 2015 ~ Baileyville, ME

2015 Field Day Program

8:30am - ongoing **Registration**

8:50am **Welcome (Main Tent)**

Exhibitors' tent, education stations, self-guided tours, equipment demos, music, children's games, and refreshments all day. Music is provided by the Burhoe Band – Josh and Blaine Burhoe, who are both loggers, and they will be playing mostly old country with a bit of classic rock.

9:00 - 11:00am

Education Stations

Beekeeping 101, with Barry Coleman

Saving the Monarch Butterflies, with the Coleman Family grandchildren

Forest Inventory Plots, with Ronna Coleman, US Forest Service

Small Scale Family Christmas Tree Growing, with Dave Rochester, Maine Forest Service

How to Prune Apple Trees, with Pat Owen

Forest Tree Pruning and Crop Tree Management, with Paul Miller

Restoration of the American Chestnut, with the American Chestnut Foundation

Bugs in the Woods, with Entomologists from the Maine Forest Service

Guided Forest Walks, with foresters and Coleman family members:

Oak Regeneration

Forestry as Wayne Coleman does it

Best Management Practices/Trail Construction

11:45am **Lunch** – Bill Gibson - sausages, fries, doughboys, and more! ***please bring cash, price range \$2-\$8*

12:15pm **Lunch speaker program**, including remarks from Doug Denico, Director of the Maine Forest Service

Maine Tree Farm Program: Paul Larrivee, Chair

SWOAM: Richard Nass, President

Awards/raffle/door prizes

1:15pm Repeat of Guided Forest Walks

SWOAM/Tree Farm Field Day officially ends after the 1:15 scheduled walks.

**Program is subject to change, as SWOAM & Maine Tree Farm organizers are able to confirm and add more education stations, walks, and/or demos.*



Presentation of OTFY Award to Wayne Coleman by Doug Denico, Maine Forest Service, Jan. 2015.



Smokey Bear with friend (Sue Myers, MFS Forest Ranger), 2013 Field Day.



2013 Field Day.

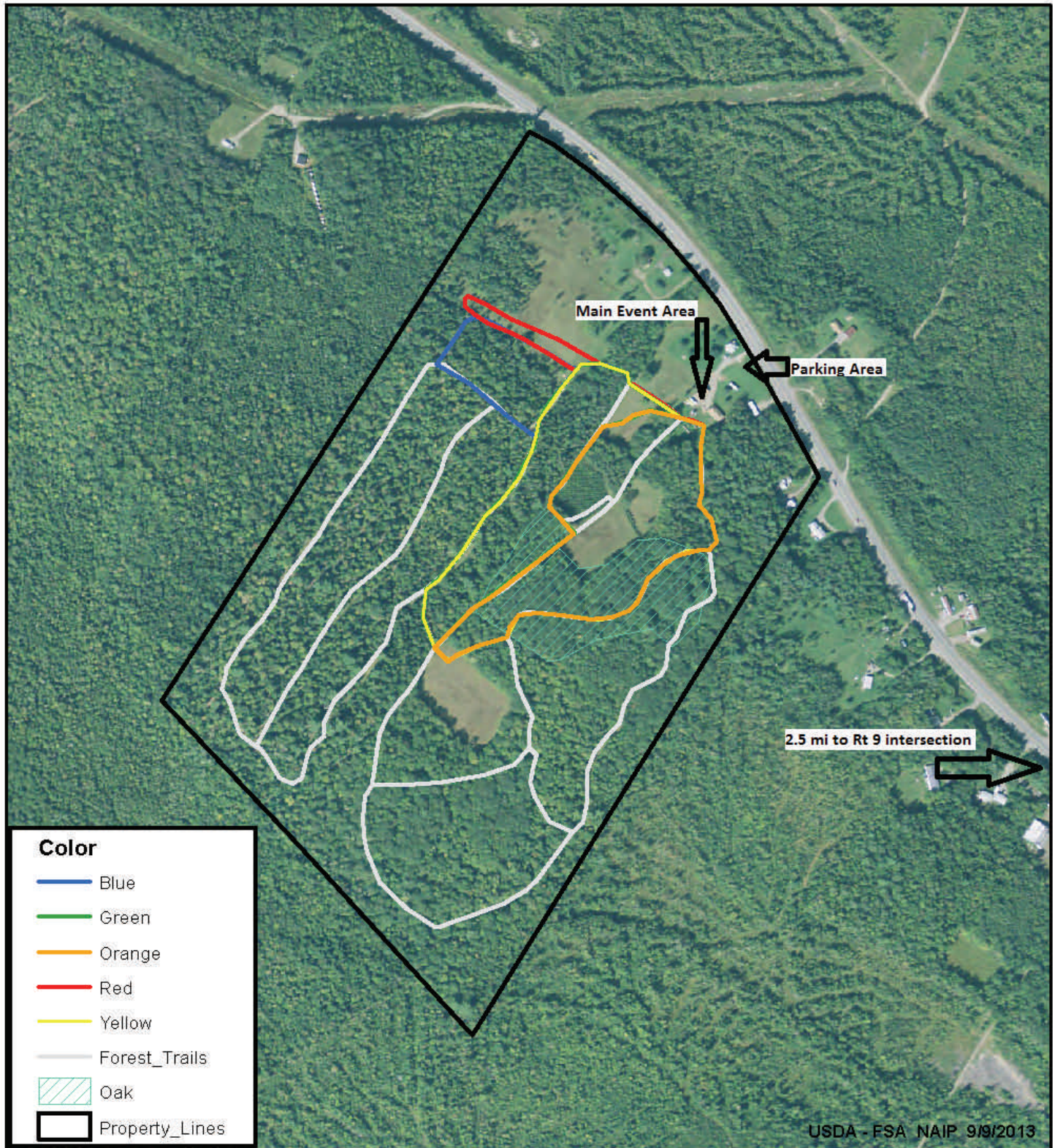


Jim and Sandra Pottle, OTFY Winners 1974 and 1998, with Geneva Duncan-Frost, Forester.

We want to hear from you! Have questions about the management of your woodlot or a story about your Tree Farm that you would like to share? Submit stories, photos, and questions to info@mainetreefarm.org or 207.613.MTFP (6837)

Coleman Family Tree Farm

411 Houlton Road (Rt 1) - Baileyville, ME



June 30, 2015



Department of Agriculture,
Conservation and Forestry
Maine Forest Service
Forest Policy & Management

Reminder: Switching to an electronic version will help you save on printing and postage costs, and stretch our limited budget even further. You can access the online version and subscribe today at: www.mainetreefarm.org/newsletter.html

SWOAM Raffle Open until September 18!

The Maine Tree Farm Committee would like you to know: There's still time to participate in the Small Woodland Owners Association of Maine (SWOAM)'s popular annual raffle. Tickets are included in this newsletter. Among the great prizes are a Stihl chainsaw; \$100 L.L. Bean gift card; a slate clock; a Maine Atlas and Gazetteer; a Barnel folding saw; a Leatherman Super Tool with pocket knife, and more. You don't have to be a SWOAM member to participate--although you might want to consider joining! Tree Farms and SWOAM go together like woodlots and wildlife.

Entering is easy. Just fill out any number of tickets with your name and phone number and return them to SWOAM. Please include \$1 for single tickets or \$5 for six. Fill out contact information and then send the tickets, with payment in the form of a check to **SWOAM**, PO Box 836, Augusta, ME 04332. Or, bring them to the **Annual Tree Farm/SWOAM Field Day in Baileyville on September 12!**

The raffle helps support SWOAM programs, and all items in the raffle have been generously donated. Tickets will be accepted by SWOAM until September 18 until noon. Winners will be contacted directly and announced in the October edition of SWOAM's Maine Woodlands newsletter.

Good luck!

New ATFS Management Plan Addendum Available Now!

The American Tree Farm System® (ATFS) announces the release of the [ATFS Management Plan Addendum for the 2015-2020 Standards of Sustainability](#).

The ATFS Management Plan Addendum is an easy-to-use tool that supports Certified Tree Farmers and Family Forest owners. It's designed to help document the range of resources to consider as you care for your woodlands. As you work toward your goals objectives, the addendum form will also help you align with the recently updated 2015-2020 Tree Farm Standards of Sustainability. The Standards are the benchmark for all Certified Tree Farmers and Family Forest owners, verifying the good stewardship that is regularly practiced by participants in ATFS.

This Addendum form is designed as a complement to your current forest management plan. Your management plan outlines the goals you have for your land and a strategy for achieving those goals. The addendum can be retained for your personal records; during a Tree Farm Inspection or a third-party assessment, you can use it along with your management plan to demonstrate conformance to the Standards.

If you had occasion to use the previous Addendum, you will see some changes from the old form. The [new Addendum](#) is a better, more user-friendly tool. With a series of check-boxes and sign-off lines, you can easily address the elements that pertain to your Tree Farm, while acknowledging the ones that don't. These improvements are based on feedback received from State Tree Farm Committees, inspecting foresters and Tree Farmers, as well as insights gained in the third-party assessment process. If you would like a paper version of the Addendum mailed to you, please contact the Maine Tree Farm Coordinator.

Use of the [ATFS Addendum](#) is not a Tree Farm program requirement, nor is it needed for every Tree Farm. Think of it as a good and useful tool for updating your forest management plan to ensure it reflects your goals, objectives and the current state of your woods. It also helps the Maine Tree Farm Committee and your Inspecting Forester to demonstrate conformance with all the ATFS Standards within your state program.

National ATFS will be promoting the [new ATFS Addendum](#) through various communication channels ("Forests and Families" emails, webinars, Facebook, etc.) and we hope you will help us spread the word about this new tool for Tree Farmers.

Questions? Please feel free to contact your Inspecting Forester, the Maine Tree Farm Coordinator at coordinator@mainetreefarm.org, or National ATFS at operations@treefarmssystem.org.

Other Upcoming Events

09.25-27.2015 - Common Ground Country Fair - Unity, ME

<http://www.mofga.org/theFair>

~ *Volunteers needed for the Tree Farm booth at the Common Ground Country Fair, please contact us!!*

10.04-11.2015 - Fryeburg Fair - Fryeburg, ME

<http://www.fryeburgfair.org/>

~ *Volunteers needed for the Tree Farm booth at the Fryeburg Fair, please contact us!!*

10.18.2015 - Great Maine Apple Day - Unity, ME

<http://www.mofga.org/Default.aspx?tabid=294>

For other fun events, please check out the event calendars at swoam.org, hvnc.org, and <http://www.maine.gov/dacf/mfs/events.html>

Most Recent Outstanding Tree Farmers Of The Year, and All-Time Washington County Winners:

2015	Wayne and Peggy Coleman	Baileyville
2014	Hidden Valley Farm and Hidden Valley Nature Center	Alna, Whitefield, and Jefferson
2013	Abbott and Miriam Ladd	Belgrade
2012	Ernest and Alberta Angevine	Bethel
2011	Allen Higgins and Paula Hersom	Brunswick
2010	Andrew Abello and Amanda Russell	Edgecomb
2000	Bell Family—Tide Mill Farms	Edmunds
1998, 1974	Jim and Sandra Pottle	Perry
1965	Donald E. Fitzpatrick	Danforth

program of the American Forest Foundation

The American Tree Farm System is a

Augusta, ME 04332

PO Box 5470

American Tree Farm System
Maine Tree Farm Committee

